

## INSTALLATION GUIDELINES

CAPACITY	SERIES	WEIGHT PER FOOT	MAX. L1	MAX. L2	MAX. L5	MAX. L9
250#	GLCS	4.88 #	20'	48"	18"	48"
	AL	4.00 #	20'	30"	48"	48"
	GLCSL	8.14 #	25'	48"	18"	48"
500#	GLCS	7.23 #	20'	48"	24"	48"
	AL	4.70 #	20'	30"	48"	48"
	GLCSL	10.94 #	25'	48"	24"	48"
1000#	GLCSLX	11.26 #	30'	48"	24"	48"
	GLCS	12.09 #	20'	48"	24"	48"
	AL	8.30 #	20'	30"	48"	48"
2000#	GLCSL	13.37 #	25'	48"	24"	48"
	GLCSLX	15.31 #	30'	48"	24"	48"
	GLCS	14.59 #	20'	48"	24"	48"
4000#	AL	10.20 #	20'	30"	48"	48"
	GLCSL	20.14 #	25'	48"	24"	48"
	GLCSLX	20.95 #	30'	48"	24"	48"
4000#	GLCS	18.42 #	20'	48"	24"	48"
	GLCSL	23.83 #	25'	48"	24"	48"
	GLCSLX	28.02 #	30'	48"	24"	48"

### L 1 = MAXIMUM SUPPORT ASSEMBLY CENTERLINE

Maximum Support Assembly Centerline is considered from the center of a support assembly to the center of the neighboring support assembly.

### L 2 = SPLICE JOINT CENTERLINE TO SUPPORT ASSEMBLY CENTERLINE

Splice Joint Centerline to Support Assembly Centerline is considered from center of a splice joint to the center of the nearest support assembly.

### L 4 = BRIDGE SPAN

Bridge Span is considered from centerline to centerline of runways.

L4 = Bridge Overall Length — (2 X Bridge Cantilever)

### L 5 = BRIDGE CANTILEVER

Bridge Cantilever is considered from the centerline of the runway to the end of the bridge (see table and notes).

### L 9 = MAXIMUM RUNWAY CANTILEVER

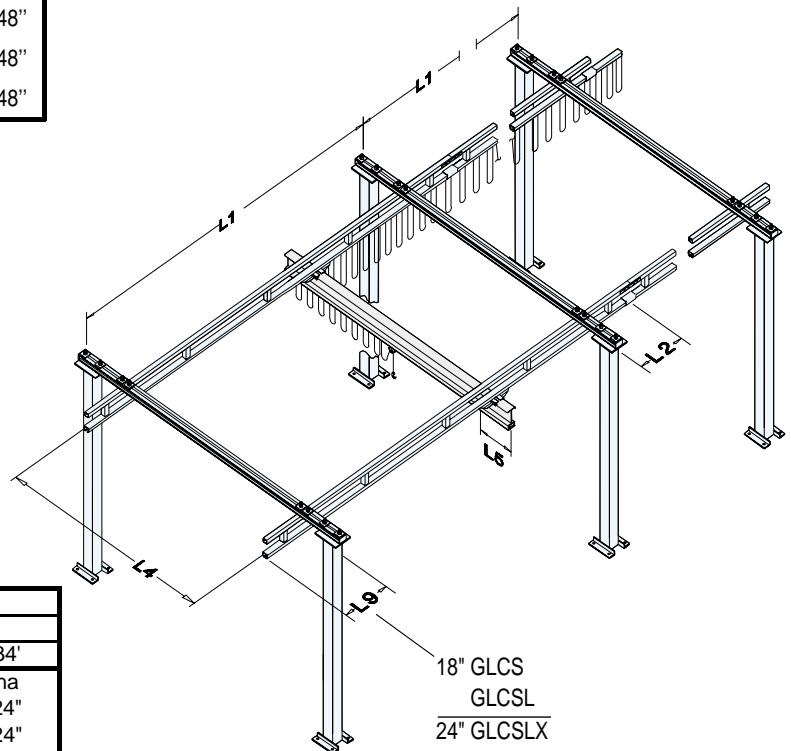
Runway Cantilever is considered from the center of the end support assembly to the end of the runway.

Note: Anti-kick-up end trucks\* are required for the following:  
 bridges with  $\leq 8'$  span (L4) and a bridge cantilever (L5)  $\geq 12'$   
 \*\*bridges with  $< 10'$  span (L4) and a bridge cantilever (L5)  $> 15'$   
 bridges with  $< 15'$  span (L4) and a bridge cantilever (L5)  $> 18'$

\*Anti-kick-up end trucks are not included as part of the standard crane kits.

\*\*2000# @ 10' span (L4) and bridge cantilever (L5) 15" need anti-kick-up end trucks.

Consult Gorbel factory for information on bridges greater than 15' span (L4).

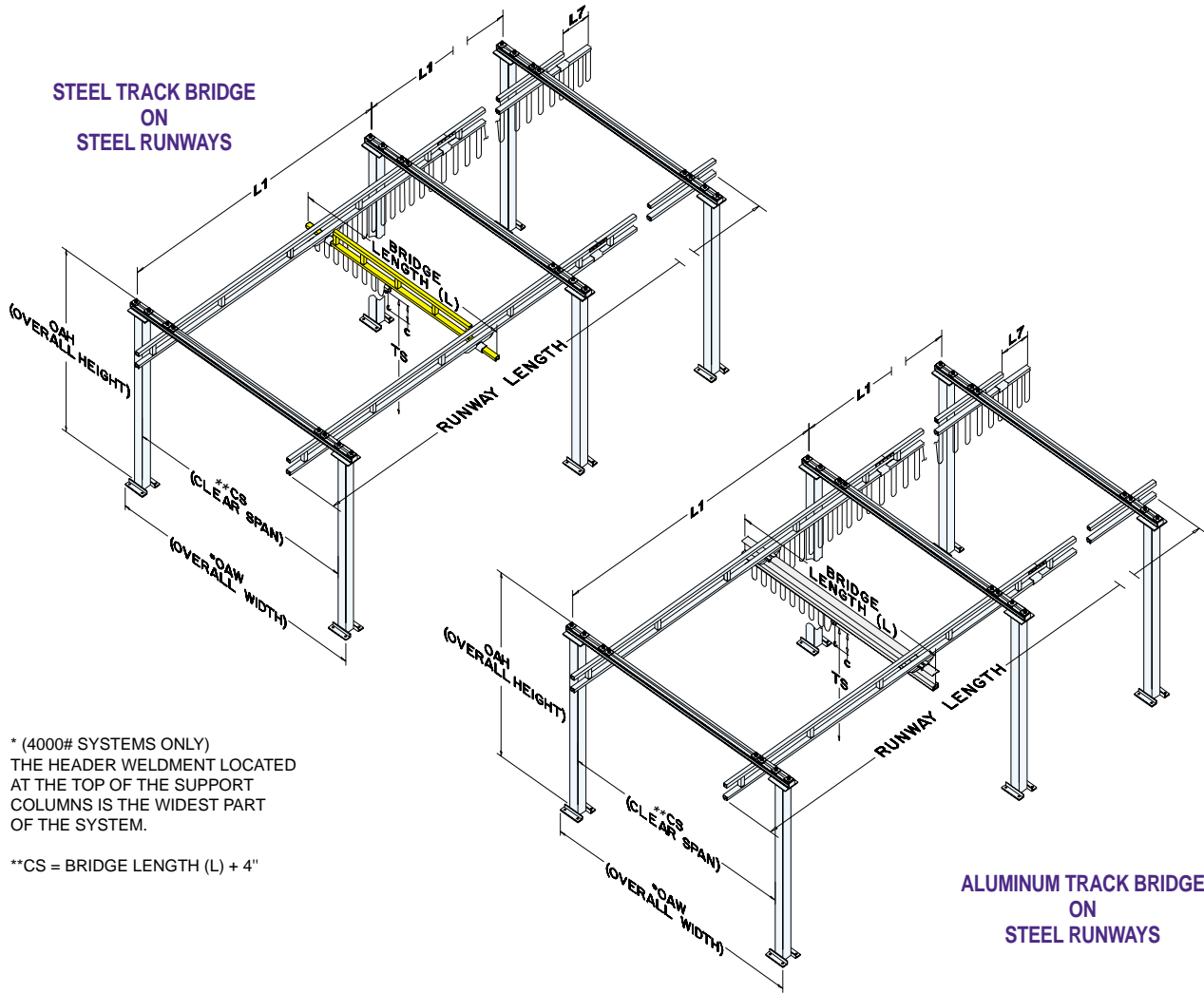


STANDARD BRIDGE CANTILEVER	Bridge Series	Bridge Overall Length				
		Steel				
		$\leq 23'$	28'	29'	33'	34'
	250	12"	18"	24"	na	na
	500	12"	18"	24"	18"	24"
	1000	12"	18"	24"	18"	24"
	2000	12"	18"	24"	18"	24"
	4000	15"	18"	24"	18"	24"

STANDARD BRIDGE CANTILEVER	Bridge Series	Bridge Overall Length					
		Aluminum					
		$\leq 20'$	23'	28'	29'	33'	34'
	250	12"	18"	18"	na	na	na
	500	12"	18"	18"	24"	18"	24"
	1000	12"	18"	18"	24"	18"	24"
	2000	12"	18"	18"	24"	18"	24"
	4000	12"	18"	18"	24"	18"	24"

Note: For Bridge OALs between lengths shown, round up to the larger lengths. Maximum L5 may not be achievable (dependent on truss design of bridge). The maximum L5 dimension using AL series rail does not pertain to coped aluminum bridges.

**FREE STANDING WORK STATION BRIDGE CRANES  
STEEL RUNWAYS WITH STEEL OR ALUMINUM BRIDGE  
ISOMETRIC VIEW**



\* (4000# SYSTEMS ONLY)  
THE HEADER WELDMENT LOCATED  
AT THE TOP OF THE SUPPORT  
COLUMNS IS THE WIDEST PART  
OF THE SYSTEM.

\*\*CS = BRIDGE LENGTH (L) + 4"

**ALUMINUM TRACK BRIDGE  
ON  
STEEL RUNWAYS**

Model Number: \_\_\_\_\_

Capacity: \_\_\_\_\_ Pounds

Bridge Length (L): \_\_\_\_\_ (OAL)

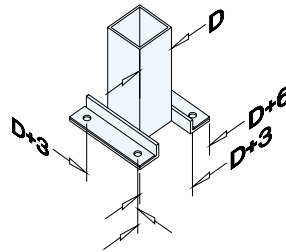
Runway Length: \_\_\_\_\_ (OAL)

Trolley Saddle Height: \_\_\_\_\_ (TS)

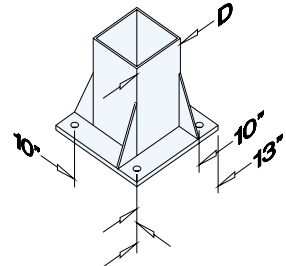
L1: \_\_\_\_\_ Are the number of support assemblies provided sufficient?  
(See "SUPPORT" column on dimensional chart pages.)

C: \_\_\_\_\_ inches (hoist by others)

**250# - 2000# SERIES  
COLUMN BASE DETAIL**



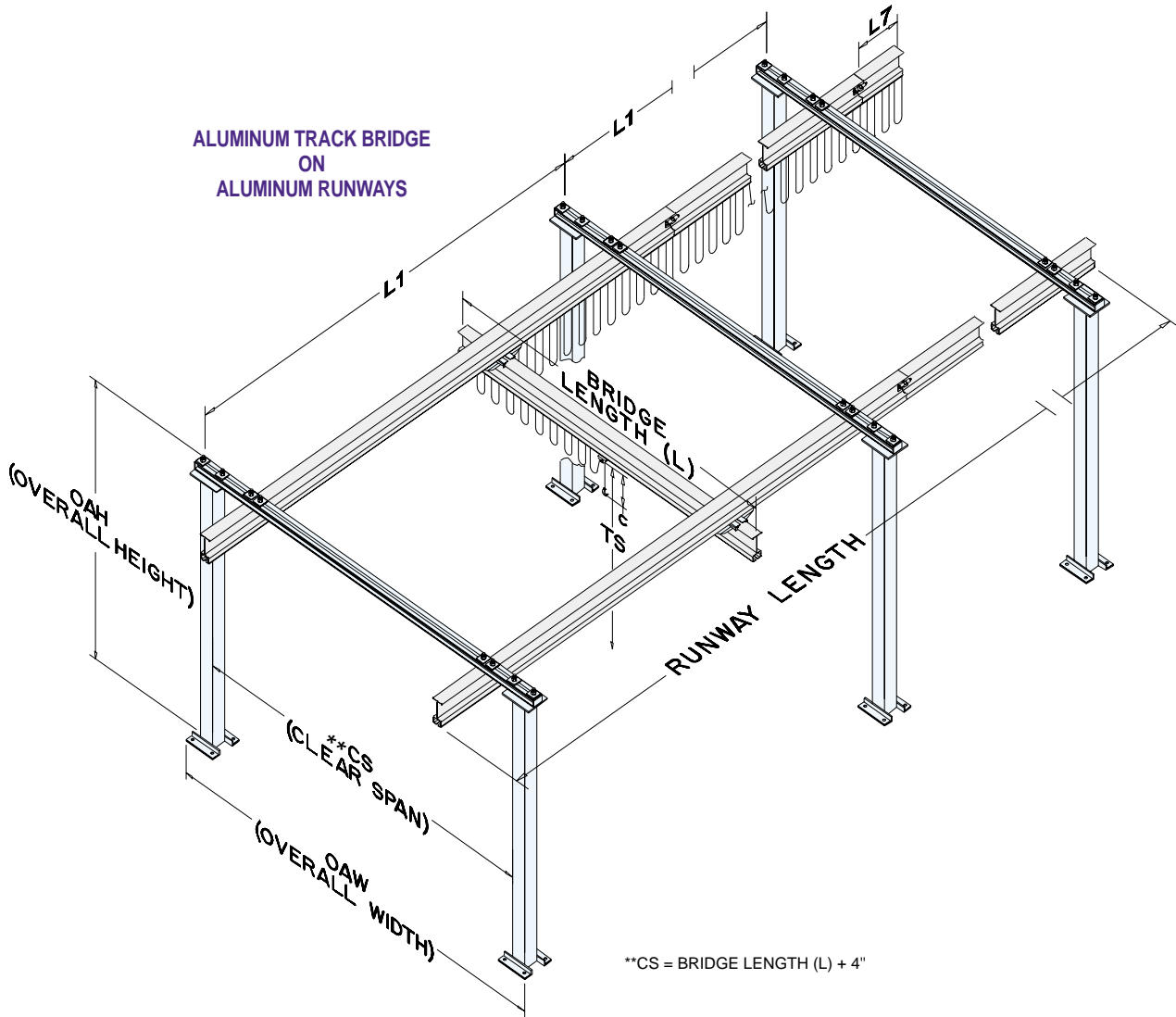
**4000# SERIES  
COLUMN BASE DETAIL**



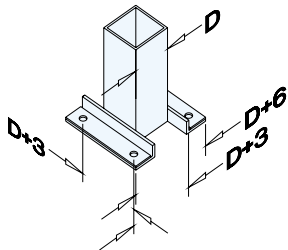
Gorbel Free Standing Work Station Crane kits include: bridge, runways, the appropriate number of support assemblies, hoist trolley, end trucks, end stops, flat wire festooning, festoon gliders (festoon trolleys on steel runway lengths greater than 63' and all aluminum systems), festoon stack-up section, splice joints and hanger brackets. Hoist and anchor bolts provided by others.

Dimensions are for reference only and are subject to change without notice.

**FREE STANDING WORK STATION BRIDGE CRANES  
ALUMINUM RUNWAYS WITH ALUMINUM BRIDGE  
ISOMETRIC VIEW**



**250# - 2000# SERIES  
COLUMN BASE DETAIL**



Gorbel Free Standing Work Station Crane kits include: bridge, runways, the appropriate number of support assemblies, hoist trolley, end trucks, end stops, flat wire festooning, festoon gliders (festoon trolleys on steel runway lengths greater than 63' and all aluminum systems), festoon stack-up section, splice joints and hanger brackets. Hoist and anchor bolts provided by others.

Dimensions are for reference only and are subject to change without notice.

Model Number: \_\_\_\_\_

Capacity: \_\_\_\_\_ Pounds

Bridge Length (L): \_\_\_\_\_ (OAL)

Runway Length: \_\_\_\_\_ (OAL)

Trolley Saddle Height: \_\_\_\_\_ (TS)

L1: \_\_\_\_\_ Are the number of support assemblies provided sufficient?

(See "SUPPORT" column on dimensional chart pages.)

C: \_\_\_\_\_ inches (hoist by others)

## FREE STANDING WORK STATION BRIDGE CRANES STEEL RUNWAYS WITH STEEL OR ALUMINUM BRIDGE

Model Number: \_\_\_\_\_

Capacity: \_\_\_\_\_ Pounds

Bridge Length (L): \_\_\_\_\_ (OAL)

Runway Length: \_\_\_\_\_ (OAL)

Trolley Saddle Height: \_\_\_\_\_ (TS)

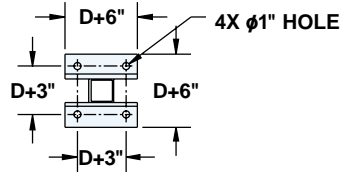
L1: \_\_\_\_\_ Are the number of support assemblies provided sufficient?  
(See "SUPPORT" column on dimensional chart pages.)

C: \_\_\_\_\_ inches (hoist by others)

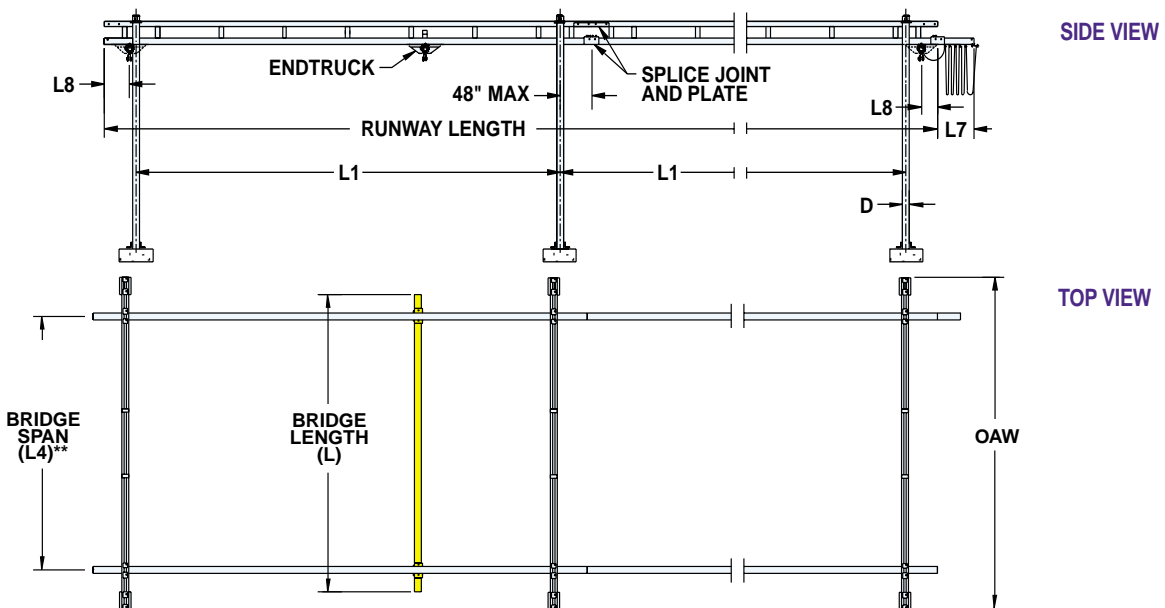
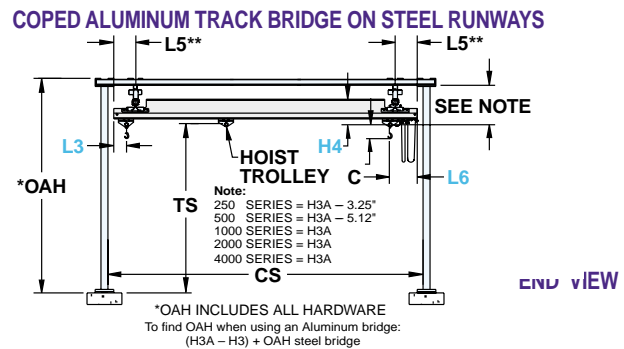
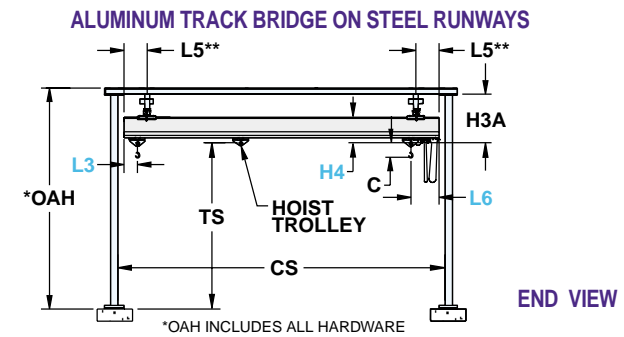
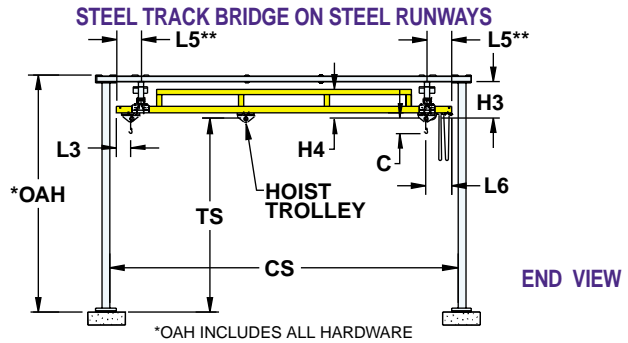
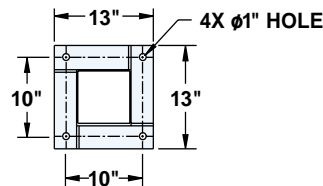
Gorbel Free Standing Work Station Crane kits include: bridge, runways, the appropriate number of support assemblies, hoist trolley, end trucks, end stops, flat wire festooning, festoon gliders (festoon trolleys on steel runway lengths greater than 63' and all aluminum systems), festoon stack-up section, splice joints and hanger brackets. Hoist and anchor bolts provided by others. Dimensions are for reference only and are subject to change without notice.

\*\*For L4 and L5 dimensions, refer to page 9.

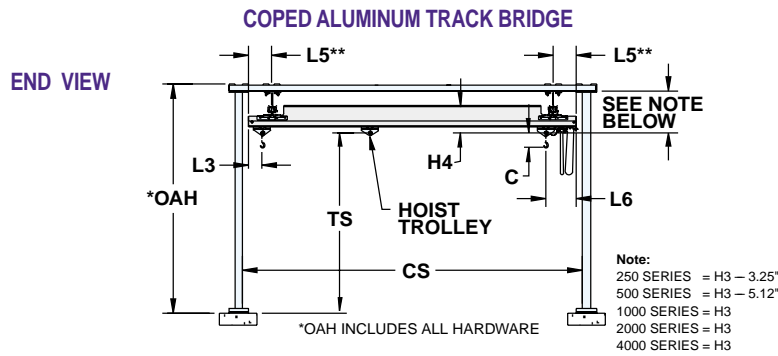
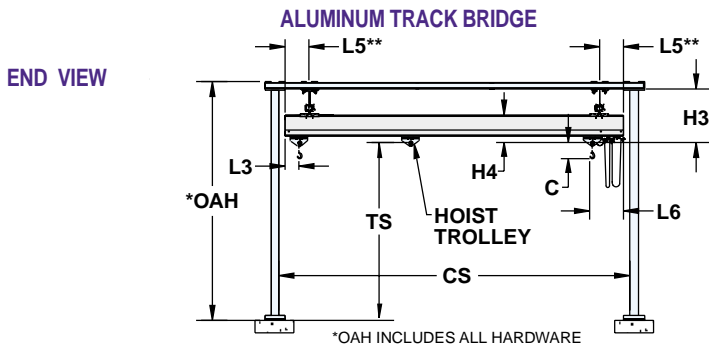
### 250# - 2000# SERIES BASE BOLT PATTERN



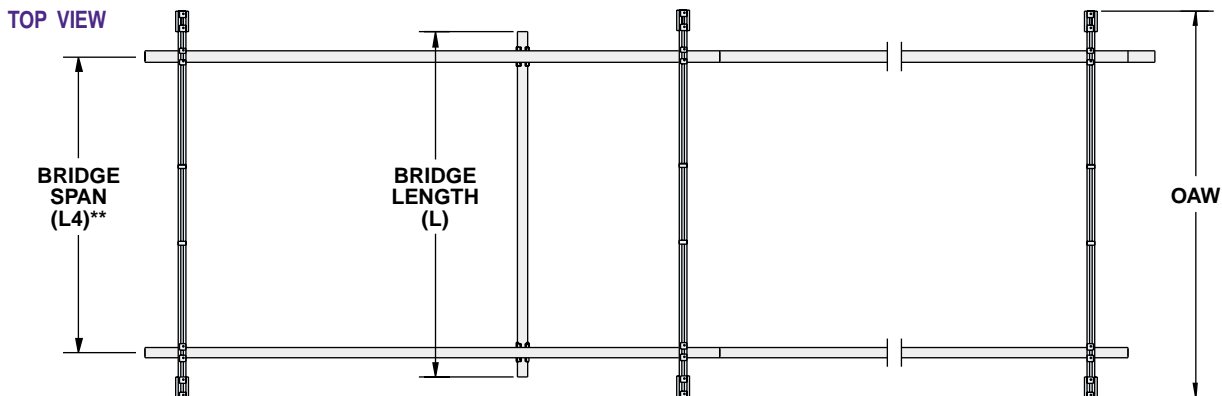
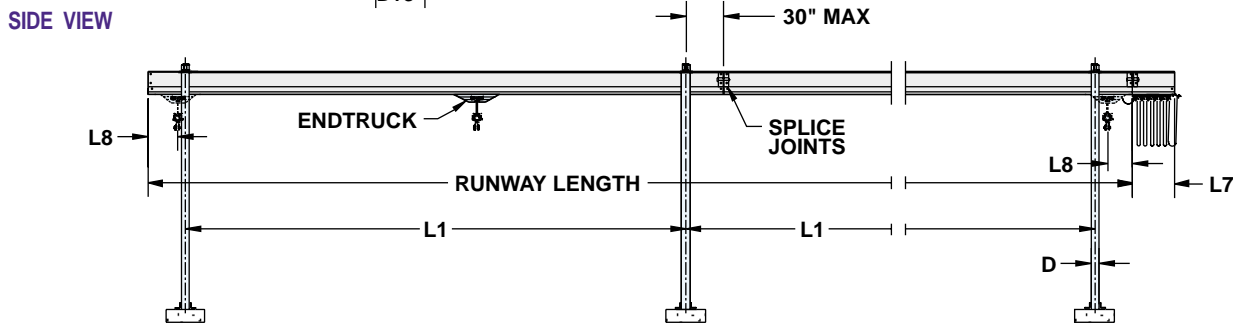
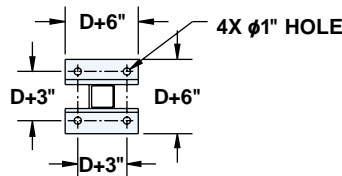
### 4000# SERIES BASE BOLT PATTERN



## FREE STANDING WORK STATION BRIDGE CRANES ALUMINUM BRIDGE ON ALUMINUM RUNWAYS



### 250# - 2000# SERIES BASE BOLT PATTERN



Model Number: \_\_\_\_\_

Capacity: \_\_\_\_\_ Pounds

Bridge Length (L): \_\_\_\_\_ (OAL)

Runway Length: \_\_\_\_\_ (OAL)

Trolley Saddle Height: \_\_\_\_\_ (TS)

L1: \_\_\_\_\_ Are the number of support assemblies provided sufficient?

(See "SUPPORT" column on dimensional chart pages.)

C: \_\_\_\_\_ inches (hoist by others)

Gorbel Free Standing Work Station Crane kits include: bridge, runways, the appropriate number of support assemblies, hoist trolley, end trucks, end stops, flat wire festooning, festoon gliders (festoon trolleys on steel runway lengths greater than 63' and all aluminum systems), festoon stack-up section, splice joints and hanger brackets. Hoist and anchor bolts provided by others.

Dimensions are for reference only and are subject to change without notice.

\*\*For L4 and L5 dimensions, refer to page 9.